

FLAT PANEL Horizontal Fitting Instructions



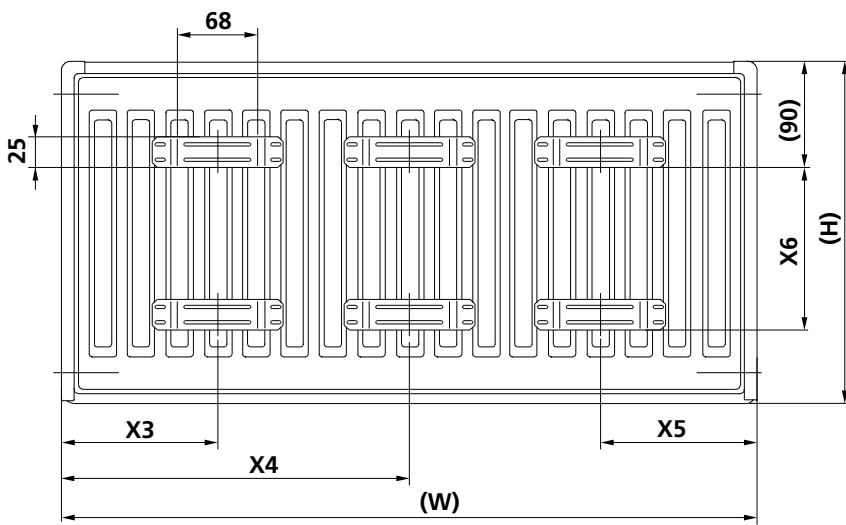
Steel Flat Panel Radiator

Type 11(K1) , Type 21(P+) Type 22 (K2)

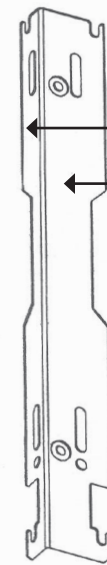
Please read these instructions and terms and conditions carefully prior to installation.
Failure to do so may invalidate the warranty.

Drawings

Fig 1 - Fixing Positions for Brackets



Bracket drawing

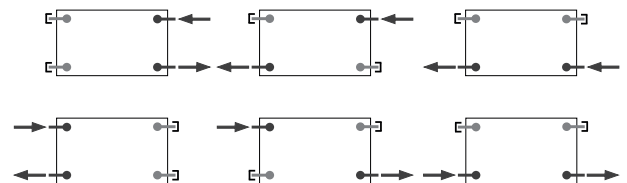


Both the short and long side can be used to hang these radiators

Table of Sizes

Width W (mm)		400	500-1600	1800	2000
X3 / X5	Type 11	117	150	150	150
	Type 21,22	133	133	133	133
X4	Type 11	-	-	883	983
	Type 21,22	-	-	900	1000

Height H (mm)	300	400	500	600	900
X6	145	245	345	445	745



Pipe Centres

	Type 11 (K1)	Type 21 (P+)	Type 22 (K2)
Pipe centres left to right	= width plus valves	= width plus valves	= width plus valves
Pipe centres from wall	= 48mm/68mm	= 56mm/76mm	= 73mm/93mm
Depth from wall	= 82mm/102mm	= 91mm/111mm	= 125mm/145mm
	<i>shorter/longer side</i>	<i>shorter/longer side</i>	<i>shorter/longer side</i>

1. Unpack & Inspect

This product should have reached you in perfect condition. Please carefully unpack and inspect this radiator and all fittings. Your point of purchase must be notified of any shortages or damage within 28 days of delivery. For further information please see terms and conditions on reverse.

2. Contents

You should have:

- 2 x L – Brackets (3 for 1800 to 2000 wide)
- 4 x plastic inserts (6 for 1800 to 2000 wide)
- 4 x 6x50 Screw (6 for 1800 to 2000 wide)
- 4 x Washer (6 for 1800 to 2000 wide)
- 4 x wall plug (6 for 1800 to 2000 wide)

You will need:

- Tape measure
- Electric drill and bits
- Spirit level
- Airvent key
- Appropriate wall fixings
- Spanners for airvents / valves

Cleaning: Steel products can be cleaned using a soft damp cloth with a non-abrasive cleaning product.

3. Installing radiator

1. Position the radiator against the wall in the desired position. Lightly mark either side of the radiator.
2. Mark up position of brackets referring to **Fig 1** for precise measurements. Using a spirit level mark on the vertical lines on bracket positions.
3. Ascertain desired height of radiator and mark. Measure down 112mm from the desired height and mark on vertical line. This will give the position of the top fixing point of the bracket. Offer up bracket to this mark and on the vertical line mark position of lower fixing point. Repeat for other bracket(s) ensuring brackets are straight horizontally.
4. Fix brackets with suitable fixings, fit plastic inserts, hang radiator and fix pipework.

4. Commission Radiator

Please Note: In accordance with Part L1 2006 of the Building Regulations and BS7593:1992 code of practice for the treatment of hot water and central heating systems, we strongly recommend flushing the heating system post installation of new radiators and then adding the correct quantity and type of inhibitor for use with your radiator and system to prevent corrosion. Damage caused to systems not protected by a suitable inhibitor will not be covered by manufacturer's guarantee.

Technical Specifications

Materials	Steel
Connections	1/2" flow and return.
Test pressure	13 Bar
Testing authority	EN442
Maximum operating pressure	10 Bar
Maximum working temperature	110°C
Packaging	Corrugated cardboard, plastic reinforcing corner covers, polyethylene shrinking foil.

PLEASE NOTE: Systems using micro bore pipework must have adequate pressure and flow rates for the number and style of radiators on the system.

Guarantees & Liabilities

This product is guaranteed for 10 years. As we are not the manufacturers of this product we will take all reasonable endeavours to make over to you the benefit of any warranty or guarantee given by the manufacturer.

The guarantees in all cases are subject to the products being installed in accordance with British and or European standards as well as these fitting instructions. The guarantees in all cases are restricted to the free of charge replacement or repair of the failed product only. Our liability will under no circumstances extend beyond the repair or replacement of the product supplied by us. Claims for either labour in replacement or damage to property are not admissible. Any goods that are returned, in the event of a problem, will belong to us.

Terms & Conditions

All products must be inspected once removed from the packaging and your point of purchase notified within 28 days of delivery of any scratches, blemishes or other damage. Your point of purchase will then agree appropriate action.

Imperfect radiators should therefore not be fitted and we will not accept responsibility for replacement of scratched or damaged radiators once they have been fitted. This includes any consequential loss or cost of fitting.

If we are not notified within 28 days of the date on the signed delivery note then it will be deemed that we have fully complied with our obligations and claims will not be considered. Failure to comply with any of the above may invalidate any claims. We recommend that after you check the product on delivery that it is stored in its packaging to prevent damage prior to installation, we cannot accept responsibility for items damaged after delivery.

FLAT PANEL Vertical Fitting Instructions

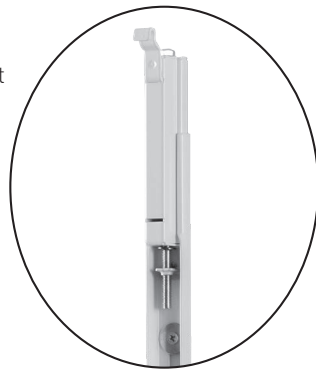
Steel Flat Panel Radiator
Type 21(P+) Vertical

Please read these instructions and terms and conditions carefully prior to installation. Failure to do so may invalidate the warranty.

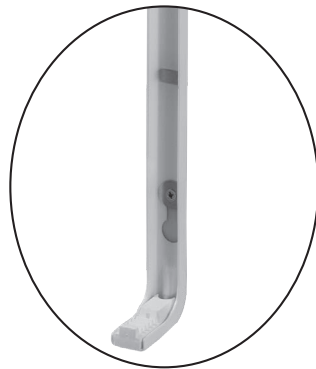


Vertical Brackets drawing

Top adjustable section of the bracket



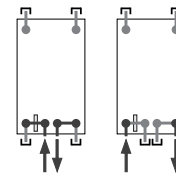
Protruding section must be at the bottom



Please note: Flat Panel Type 21 Vertical has Underneath Valve Connections

Pipe Centres

Pipe centres left to right	=	50mm / width minus 56mm
Pipe centres from wall	=	65mm
Depth from wall	=	106mm



1. Unpack & Inspect

This product should have reached you in perfect condition. Please carefully unpack and inspect this radiator and all fittings. Your point of purchase must be notified of any shortages or damage within 28 days of delivery. For further information please see terms and conditions on reverse.

2. Contents

You should have:

- 1 Radiator
- 2 Wall Brackets
- 1 Manual Airvent
- 1 Blanking Plug
- Screws and Raw Plugs

You will need:

- Tape measure
- Electric drill and bits
- Spirit level
- Airvent key
- Appropriate wall fixings
- Spanners for airvents / valves

Cleaning: Steel products can be cleaned using a soft damp cloth with a non-abrasive cleaning product.

3. Installing radiator

Radiators are supplied with 2 brackets. These brackets are fitted with protruding section at the bottom. It is important to fit the top adjustable section of the bracket before fitting to the wall.

1. Position radiator against the wall in desired position. Lightly mark position of edges of radiator on the wall. Move radiator and mark 90mm inside the marks. Using a spirit level draw 2 vertical lines the height of the radiator.
2. Offer up bracket to wall at desired height (min 150mm from floor) and mark bracket fixing positions on the drawn vertical line.
3. With a spirit level mark these fixing positions across to the other line.
4. Fit adjustable top section to brackets, do not fully tighten (note: you will not be able to fit this when bracket is fixed to the wall).
5. Drill holes and fix both brackets.
6. Offer up radiator to rest on bottom section of the brackets. Adjust top of bracket to lock the bracket onto the radiator.

4. Commission Radiator

Please Note: In accordance with Part L1 2006 of the Building Regulations and BS7593:1992 code of practice for the treatment of hot water and central heating systems, we strongly recommend flushing the heating system post installation of new radiators and then adding the correct quantity and type of inhibitor for use with your radiator and system to prevent corrosion. Damage caused to systems not protected by a suitable inhibitor will not be covered by manufacturer's guarantee.

Technical Specifications

Materials	Steel
Connections	1/2" flow and return.
Test pressure	13 Bar
Testing authority	EN442
Maximum operating pressure	10 Bar
Maximum working temperature	110°C
Packaging	Corrugated cardboard, plastic reinforcing corner covers, polyethylene shrinking foil.

PLEASE NOTE: Systems using micro bore pipework must have adequate pressure and flow rates for the number and style of radiators on the system.

Guarantees & Liabilities

This product is guaranteed for 10 years. As we are not the manufacturers of this product we will take all reasonable endeavours to make over to you the benefit of any warranty or guarantee given by the manufacturer.

The guarantees in all cases are subject to the products being installed in accordance with British and or European standards as well as these fitting instructions. The guarantees in all cases are restricted to the free of charge replacement or repair of the failed product only. Our liability will under no circumstances extend beyond the repair or replacement of the product supplied by us. Claims for either labour in replacement or damage to property are not admissible. Any goods that are returned, in the event of a problem, will belong to us.

Terms & Conditions

All products must be inspected once removed from the packaging and your point of purchase notified within 28 days of delivery of any scratches, blemishes or other damage. Your point of purchase will then agree appropriate action.

Imperfect radiators should therefore not be fitted and we will not accept responsibility for replacement of scratched or damaged radiators once they have been fitted. This includes any consequential loss or cost of fitting.

If we are not notified within 28 days of the date on the signed delivery note then it will be deemed that we have fully complied with our obligations and claims will not be considered. Failure to comply with any of the above may invalidate any claims. We recommend that after you check the product on delivery that it is stored in its packaging to prevent damage prior to installation, we cannot accept responsibility for items damaged after delivery.